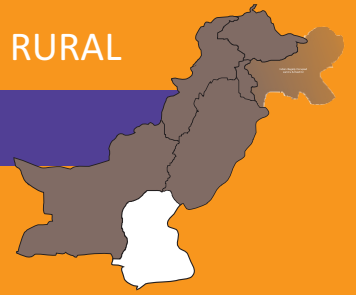


# IMPACT OF COVID-19



**25**  
Rural Districts



**720**  
Villages



**774**  
Schools



**14,273**  
Households



**41,536**  
Children (3-16 Years)

## COVID-19 IMPACT



**20**%

households stated that their **earnings** during COVID-19 were affected by more than **50%**.



**29**%

households stated that their **psychological well-being** was substantially affected during COVID-19.

## LEARNING SUPPORT DURING COVID-19

% Children-Type of Learning Support Aailed

**69**



PTV's Teleschool

**5**



Govt.'s Radio school programs

**14**



School provided Digital Learning Resources

**27**



Paid Tuition

**79**



Family members

**20**



Computer

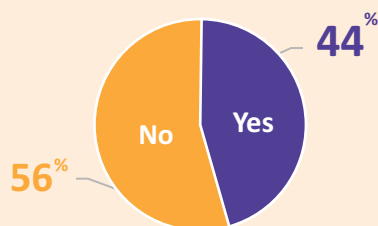
**31**



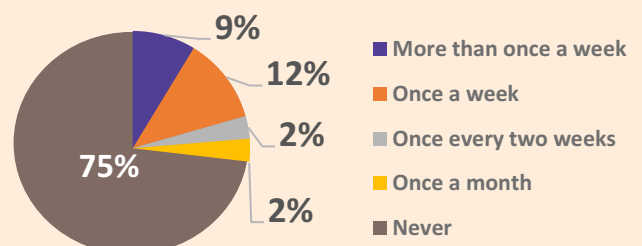
Smart Phone

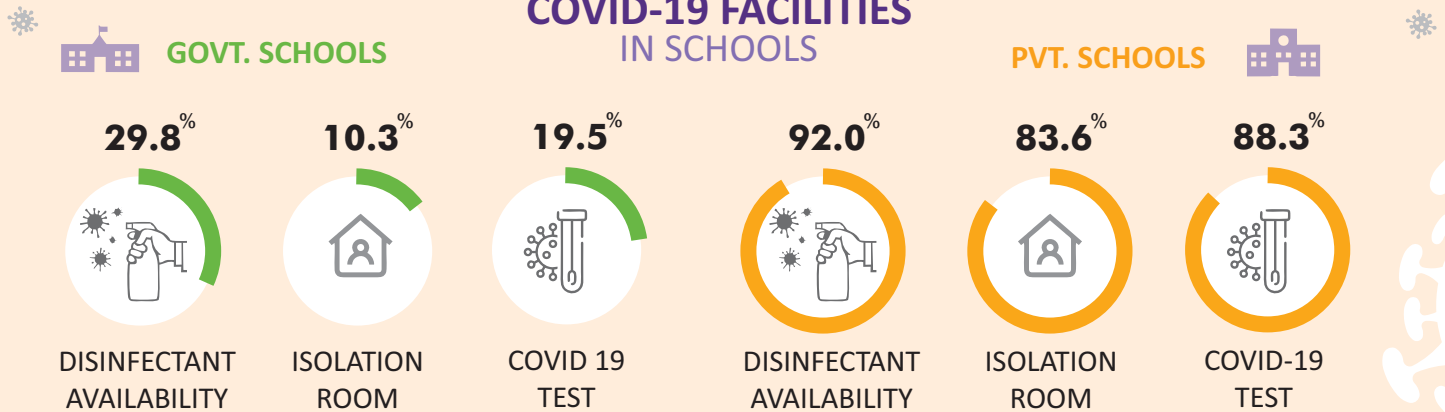
## DURING SCHOOL SHUTDOWN

Did School provide Learning Material?



How often did School Management reach for providing Learning Support?





### COVID-19 PRECAUTIONS (%SCHOOLS)

	Government Schools				Private Schools				
	Primary	Elementary	Secondary	Overall	Primary	Elementary	Secondary	other	Overall
Alternate day Schooling	23.8	37.3	45.0	28.0	46.9	32.4	67.6	33.3	48.2
Awareness posters/IEC material displayed in school	27.4	49.2	65.9	34.9	51.6	64.9	70.3	83.3	64.0
Temperature check at entrance	8.9	24.2	27.1	13.0	40.7	37.1	58.8	20.0	44.6
Hand sanitization at Entrance	19.0	45.2	57.1	26.8	56.3	44.1	71.4	80.0	58.5
Masks worn by teachers and students at school	33.9	60.3	70.6	41.6	62.5	66.7	81.1	100.0	71.8
Hand sanitizer available inside and outside of the classroom for students	15.2	51.7	56.0	24.4	36.4	50.0	69.4	60.0	52.7

### SCHOOL POLICY ON SUSPECTED COVID-19 CASES (%SCHOOLS)

	Government Schools				Private Schools				
	Primary	Elementary	Secondary	Overall	Primary	Elementary	Secondary	other	Overall
Move them to isolation room	59.4	88.9	100.0	68.2	57.6	61.1	89.2	100.0	71.2
Send the person home immediately	85.3	89.5	100.0	88.4	73.5	72.2	80.6	100.0	76.6
Call nearby health facility	81.5	90.9	92.3	83.8	54.5	52.8	68.6	100.0	60.6
Call Covid-19 helpline	76.9	71.4	85.7	77.3	66.7	80.0	92.9	100.0	84.6
No policy	0.0	0.0	0.0	0.0	-	-	-	-	-
Other	0.0	0.0	0.0	0.0	-	-	-	-	-

### SCHOOL'S LEAVE POLICY FOR CONFIRMED POSITIVE CASES (%SCHOOLS)

	Government Schools				Private Schools				
	Primary	Elementary	Secondary	Overall	Primary	Elementary	Secondary	other	Overall
Continue learning learning/teaching from home	82.7	100.0	93.3	86.1	75.0	100.0	85.7	0.0	88.0
14-days leave	87.8	100.0	96.4	90.9	81.8	100.0	81.3	100.0	88.1
Return back to school only after a negative COVID test	91.3	100.0	100.0	93.8	66.7	100.0	84.6	100.0	84.2
No policy	0.0	0.0	0.0	0.0	0.0	0.0	0.0	0.0	0.0
Other	0.0	0.0	0.0	0.0	0.0	0.0	0.0	0.0	0.0

