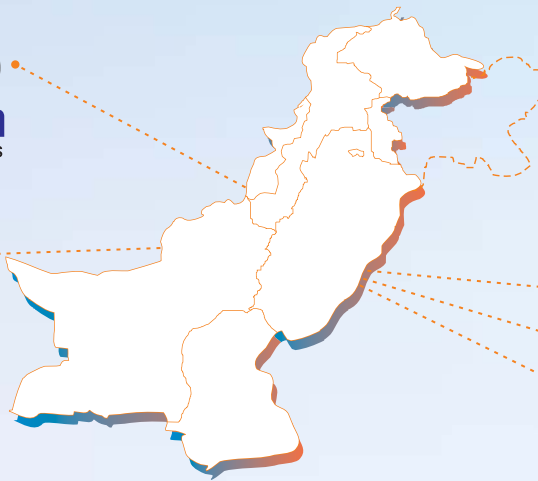


SCALE & SCOPE

27,733
Children
3-16 Years

21
Urban Centres



NATIONAL URBAN

735 Schools

520 Blocks

10,259 Households

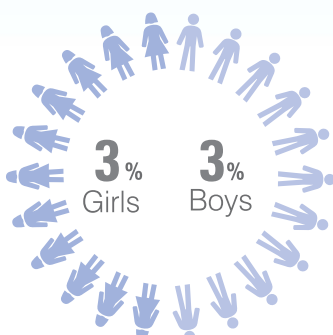
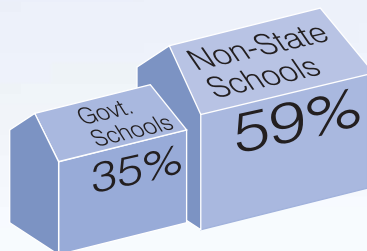
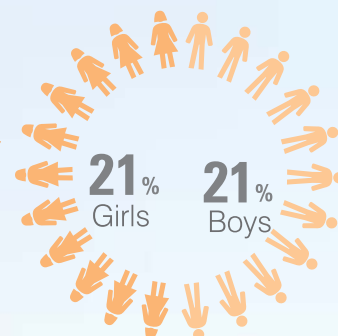
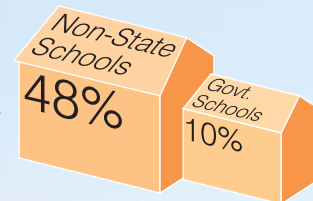
ENROLLMENT

3-5 years

Proportion of out-of-school children (3-5 years) has decreased as compared to 2013 (58%).

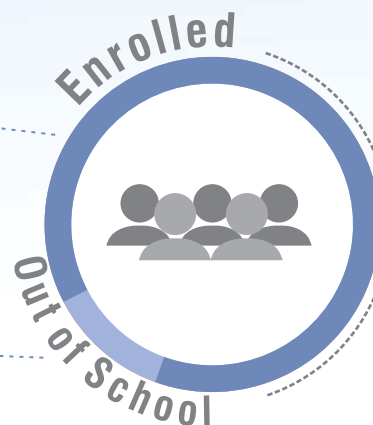


58%



94%

6%



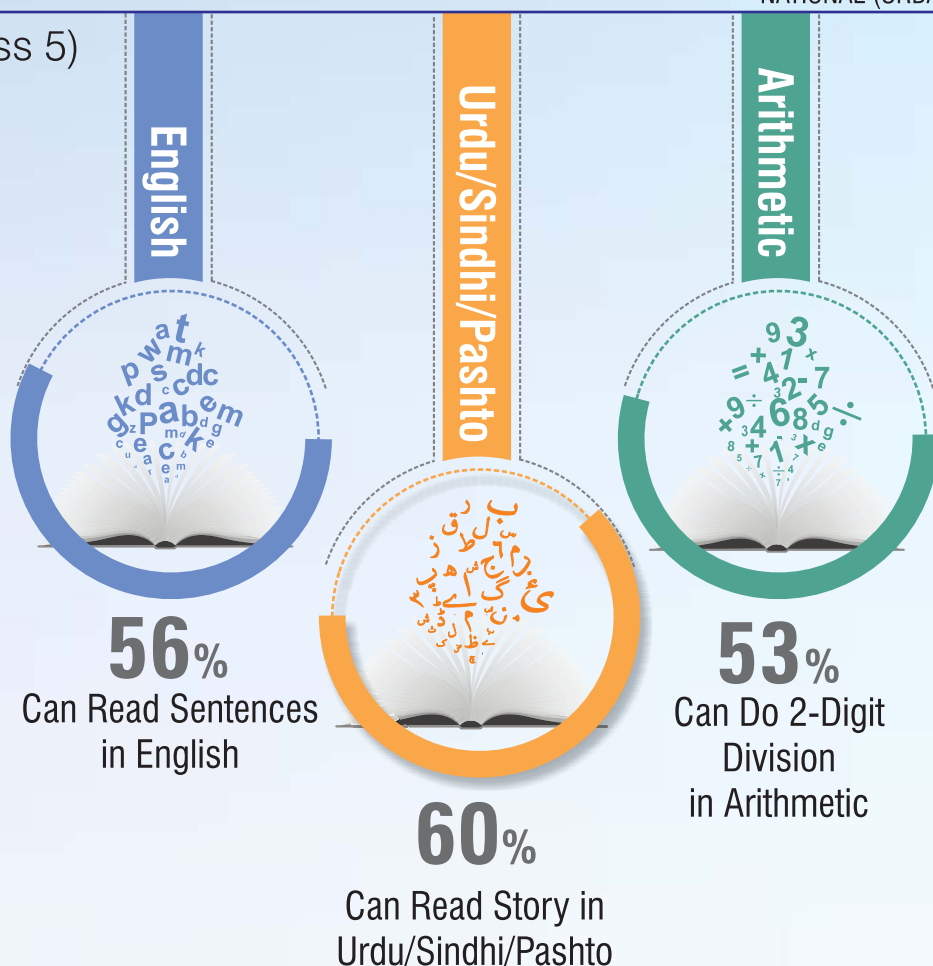
6-16 years

Proportion of enrolled children (6-16 years) has remained the same as that of 2013 (8%).

LEARNING LEVELS

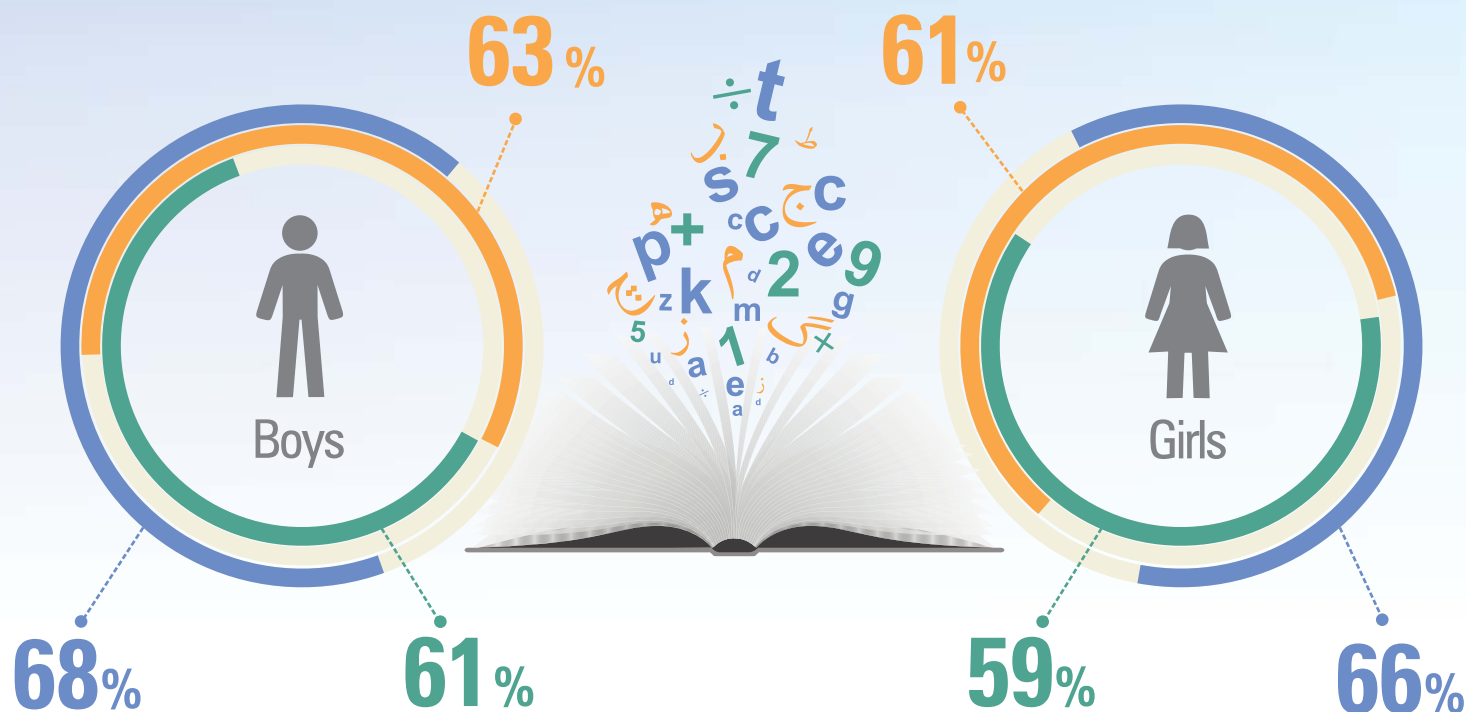
(Class 5)

- **English:** 44% class 5 children could not read sentences (class 2 level) compared to 41% in 2013.
- **Urdu/Sindhi/Pashto:** 40% class 5 children could not read class 2 story in Urdu/Sindhi/Pashto compared to 45% in 2013.
- **Arithmetic:** 47% class 5 children could not do two digit division as compared to 49% in 2013.



LEARNING LEVELS

By gender (5-16 years)



- Can read at least words in **English**
- Can read at least sentences in **Urdu/Sindhi/Pashto**
- Can do at least subtraction in **Arithmetic**

Government primary schools

Children attendance (On the day of survey)

85%



88%

Teacher attendance (On the day of survey)**Schools received grants/funds**

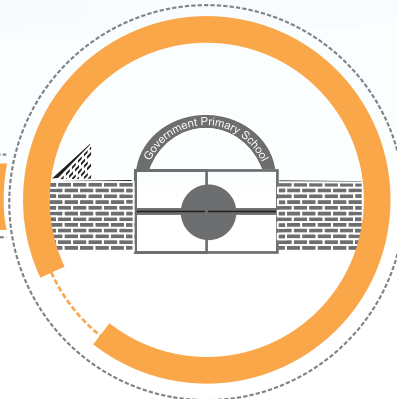
48%



81%

Useable water**Boundary wall**

91%



84%

Useable toilets

AREA WISE COMPARISON

% of Children

LEARNING LEVELS (CLASS 5)

ENROLLMENT

Name of Urban Centres	Enrollment (6-16 years)	LEARNING LEVELS (CLASS 5)			Rank*
		English Who can read sentences	Urdu/ Sindhi/ Pashto Who can read story	Arithmetic Who can do 2-digit division	
					★★★★★ ★★★★★ ★★★★★ ★★★★★ Based on children enrolled (6-16 years)
Islamabad	99.9	49.3	52.1	63.0	1
Karachi-South	99.2	85.8	84.8	48.8	2
Rawalpindi	97.4	77.1	50.0	78.9	3
Khuzdar	96.7	32.6	19.6	37.8	4
Karachi-East	96.5	63.8	49.4	67.5	5
Gujranwala	96.0	31.7	13.9	29.7	6
Hyderabad	96.0	43.0	50.0	51.3	7
Quetta	96.0	60.2	49.6	66.1	8
Lahore	95.9	69.2	63.8	68.1	9
Karachi-Malir	95.8	95.3	95.3	54.7	10
Mardan	95.1	58.9	60.7	55.4	11
Peshawar	94.1	57.7	56.3	59.6	12
Karachi-Central	93.7	46.2	38.6	52.7	13
Swat	93.2	73.5	57.1	59.2	14
Larkana	92.0	68.3	46.7	40.0	15
Faisalabad	91.9	62.7	53.6	57.1	16
Sukkur	88.3	34.0	17.9	41.9	17
Multan	88.1	64.1	59.0	67.5	18
Karachi-West	87.9	38.5	33.7	43.7	19
RahimYarKhan	86.7	82.2	80.0	88.9	20
Bahawalpur	81.8	75.8	77.1	53.7	21