



68% male and 29% female aged 10 years and older are literate in Shikarpur. Overall, the district is ranked **10** among **23** districts on literacy indicator.¹

Enrollment (Rural)

- **Children in the 3-5 age group** : 35% are attend school (47% girls and 53% boys). Of this percentage, 93% children are in government schools and 07% in private educational facilities.²
- **Children in the 6-16 age group** : 62% are enrolled (39% girls and 61% boys). Of this percentage, 90% children are enrolled in government schools and 10% in private educational facilities.²
- **Out-of-school children**: 38% children (6 -16 years) are not attending any school. Out of this number, 51% are girls and 49% boys.²

Number of Government Schools ³					
	Primary	Middle	High	Higher Secondary	Total
Boys	510	24	24	5	563
Girls	217	26	10	2	255
Mixed	529	18	13	2	562
Total	1256	68	47	9	1380

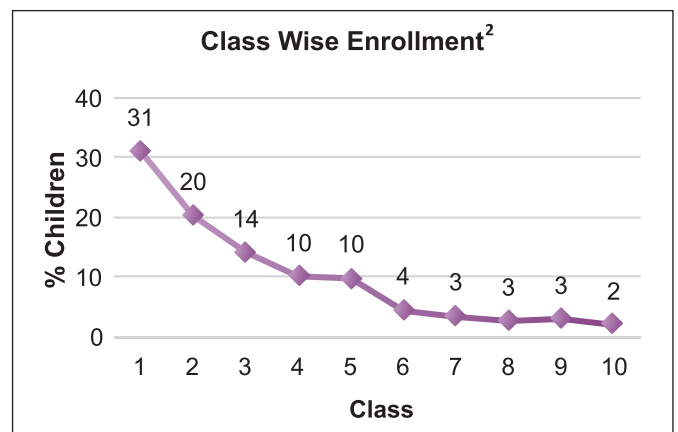
** There are 44 Schools under Sindh Education Foundation (SEF), in addition to the 1380 Government schools⁴

For every 18 Primary Schools there is only 1 Middle School

Where will the rest go?

Enrollment in Government Schools ³					
	Primary	Middle	High	Higher Sec	Total
Boys	62,670	1,669	14,463	7,607	86,409
Girls	33,558	2,226	6,559	1,603	43,946
Total	96,228	3,895	21,022	9,210	130,355

Of the 130,355 children enrolled in government schools, **34% are girls** (66% boys)

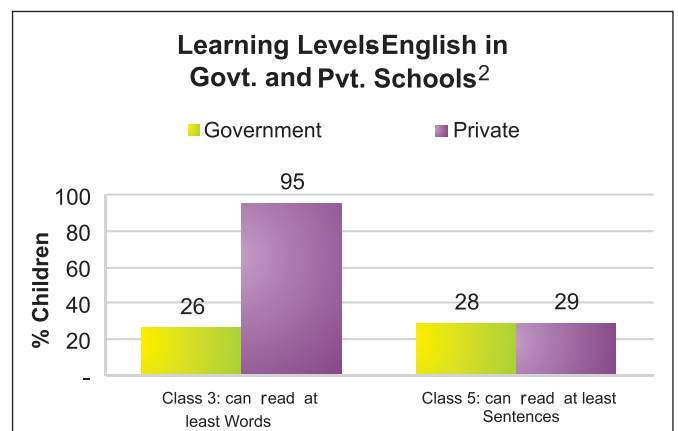
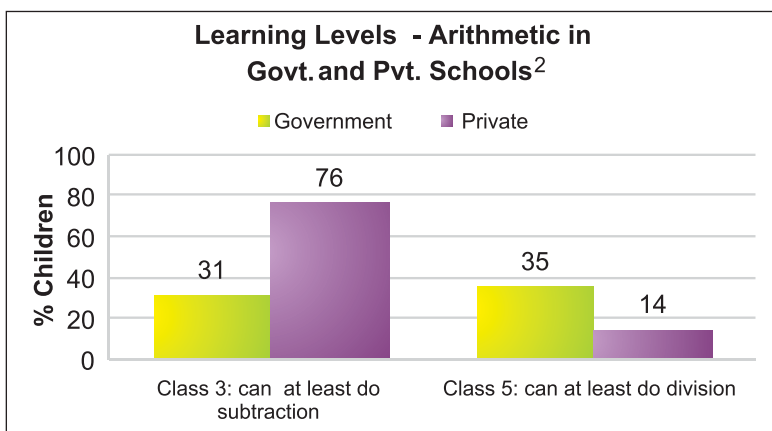
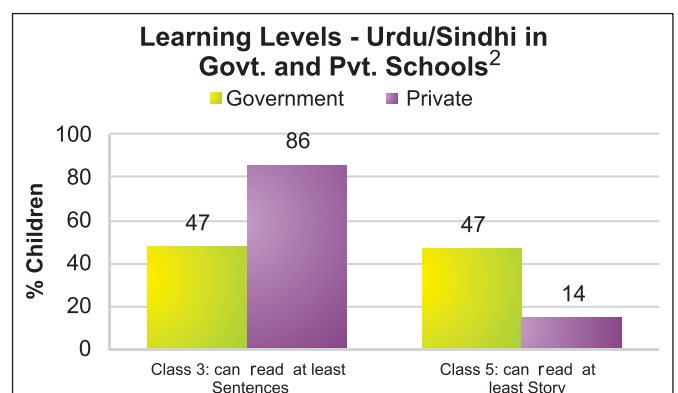


Enrollment drops significantly at middle, high and higher secondary level class

Learning Levels (Rural)²

- 47% of class 3 students in government schools and 85% in Private schools are able to read sentences in **Urdu**
- 31% of class 3 students in government schools and 76% in Private schools are able to do simple **subtraction**
- 26% of class 3 students in government schools and 95% in Private schools are able to read words in **English**

Mother Literacy: 77% illiterate and 23% literate

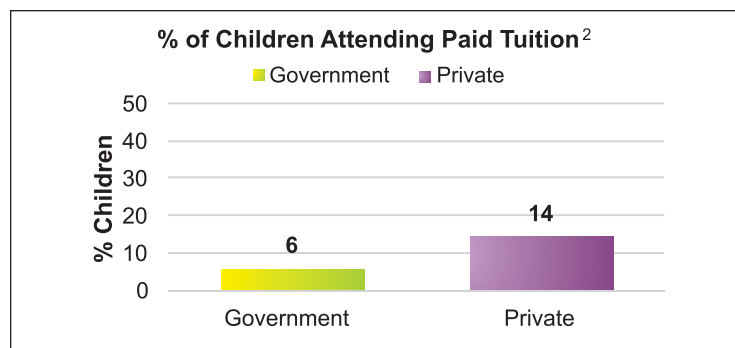


¹Source: PSLM 2010/2011 ² Source: Annual Status of Education Report-ASER 2011 (Rural)

³ Source: District Education Department Shikarpur (April 2012) ⁴ SEF (April 2012)



Teachers ³					
	Primary	Middle	High	Higher Sec	Total
Sanctioned	4053	3044	2018	1140	10255
Filled In	2918	217	793	270	4198
Vacant	1135	2827	1225	870	6057
Contract	91	6	31	15	143



Non-formal Institutes ⁴	Number of centers
Non Formal Basic Education (NFBE) Centers	-
Literacy Centers	12
Total	12

Students/Teachers Attendance in Government Schools ²					
	Primary	Elementary	High	Other	Total
% of student attendance as per head count	64	-	31	-	64
% of teacher attendance	71	-	100	-	72

School Facilities (Total Schools = 1380, (Boys 563, Girls 255 and Mixed 562)								
Government School Basic Facilities	Primary	Middle	High	Higher Sec	Total	Male	Female	Mixed
Useable Water	797	47	44	9	897 (65%)	371 (66%)	162 (64%)	364 (65%)
Useable Toilet	816	50	39	9	914 (66%)	365 (65%)	183 (72%)	366 (65%)
Rooms Available	--	--	--	--	--	--	--	--
Rooms used for classes	2932	264	402	129	3727 (Avg 3)	1447 (avg3)	804 (avg3)	1476 (avg3)
Number of Schools with 1 or 2 classrooms	--	--	--	--	--	--	--	--
Availability of Playground	606	34	15	4	659 (48%)	261 (46%)	106 (42%)	292 (52%)
Availability of Boundary wall	800	46	38	9	893 (65%)	355 (63%)	183 (72%)	355 (63%)
Number of Schools with 1 Teacher	--	--	--	--	--	--	--	--
Number of Schools with 2 Teacher	--	--	--	--	--	--	--	--

District EDUCATION Budget for Schools FY 2009 -10 to 2011 -2012 (Rs. Million) ⁵						
Financial Year	Allocation			Utilization		
	Current	Development	Total	Current	Development	Total
2009-10	416.410	832.821	1249.231	312.410 (75%)	732.821 (88%)	1045.231 (84%)
2010-11	912.123	904.123	1816.246	613.701 (67%)	713.401 (79%)	1327.102 (73%)
2011-12	51.437	154.312	205.749	-	-	-

Urgent Action and suggestions

- Up-gradation of more primary schools to elementary and high schools
- Ensure quality learning is taking place in schools by reducing absenteeism of teachers & students, and regular monitoring by parents/SC
- Ensure adequate number of teachers in schools (high priority be given to 1 and 2 teacher schools)
- Ensure all schools have functional toilets, clean drinking water and boundary walls, especially for girls
- Increase district education budget as per requirements to ensure provision of missing facilities

Note: -- data is not available

² Sources: ASER 2011 (Rural) ³ District Education Department Shikarpur (April 2012) ⁴ District Literacy Department Shikarpur (April 2012)⁵

District Finance & Planning Department Shikarpur (April 2012)