

District Report Card - Education

Hyderabad



Annual Status of Education Report
اثر
ASER
PAKISTAN
2011
Facilitated by SAFED

75% male and 62% female aged 10 years and older are literate in Hyderabad. Overall, the district is ranked **02** among **23** districts on literacy indicator.¹

Enrollment

- Children in the 3-5 age group:** 30% are attend school (37% girls and 63% boys). Of this percentage, 83% children are in government schools and 17% in private educational facilities.²
- Children in the 6-16 age group :** 75% are enrolled (37% girls and 63% boys). Of this percentage, 88% children are enrolled in government schools and 12% in private educational facilities.²
- Out-of-school children:** 25% children (6-16 years) are not attending any school. Out of this number, 51% are girls and 49% boys.²

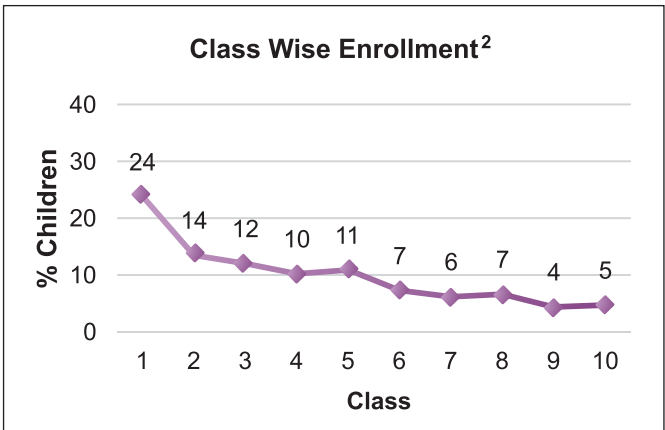
Number of Government Schools ³					
	Primary	Middle	High	Higher Secondary	Total
Boys	185	33	42	3	263
Girls	170	26	33	6	235
Mixed	549	22	7	4	582
Total	904	81	82	13	1080

**** There are 57 Schools under Sindh Education Foundation (SEF), in addition to the 1080 Government schools⁴**

For every 11 primary Schools there is only 1 Middle school.
Where will the rest go?

Enrollment in Government Schools ³					
	Primary	Middle	High	Higher Sec	Total
Boys	56,987	4,162	18,024	6,365	85,538
Girls	52,173	4,443	20,668	6,645	83,929
Total	109,160	8,605	38,692	13,010	169,467

Of the 169,467 children enrolled in government schools,
only 50% are girls (50% boys)

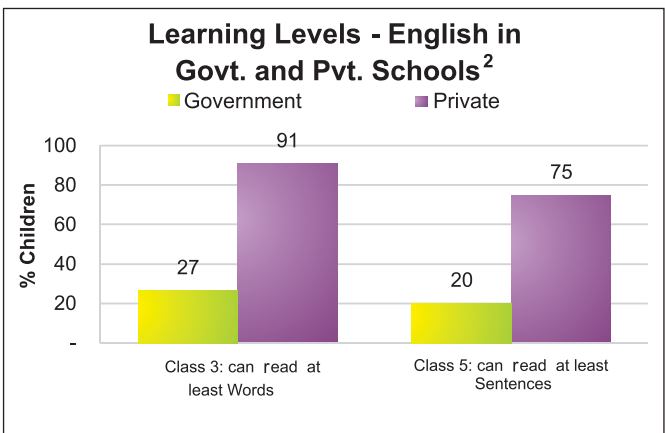
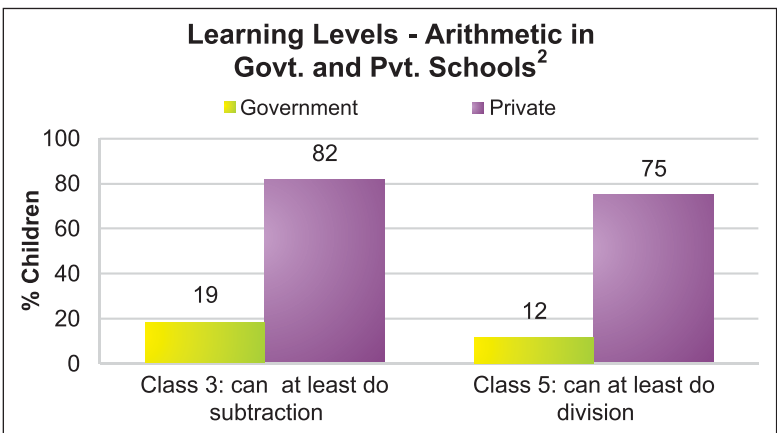
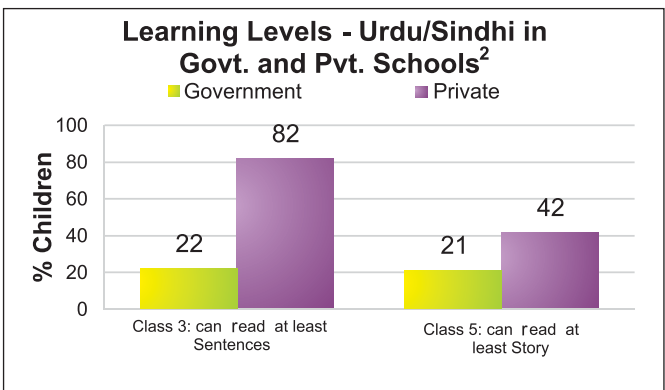


Enrollment drops significantly at middle, high and higher secondary level class

Learning Levels (Rural)²

- 22% of class 3 students in government schools and 82% in Private schools are able to read sentences in **Urdu**
- 19% of class 3 students in government schools and 82% in Private schools are able to do simple **subtraction**
- 27% of class 3 students in government schools and 91% in Private schools are able to read words in **English**

Mother Literacy: 65% illiterate and 35% literate



¹Source: PSLM 2010-2011 ² Source: Annual Status of Education Report - ASER (Rural) 2011

³Source: District Education Department Hyderabad (April 2012)

⁴Source: SEF (April 2012)

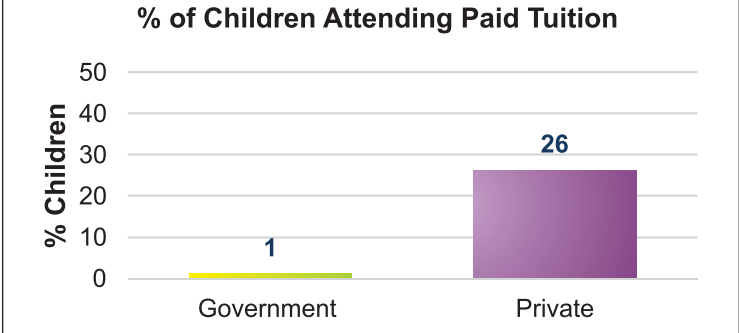
District Report Card - Education

Hyderabad



Annual Status of Education Report
اثر
ASER
PAKISTAN
Facilitated by SAFED
2011

Teachers ³					
	Primary	Middle	High	Higher Sec	Total
Sanctioned	5297	813	2530	1024	9664
Filled In	5090	467	2023	453	8033
Vacant	207	346	507	571	1631
Contract	204	87	193	71	555



Non-formal Institutes ⁴	Number of centers
Non Formal Basic Education (NFBE)	20
Centers	
Literacy Centers	04
Total	24

Students/Teachers Attendance in Government Schools ²					
	Primary	Elementary	High	Other	Avage
% of student attendance as per head count	62	-	42	56	56
% of teacher attendance	93	-	89	89	91

School Facilities (Total Schools = 1080, (Boys 263, Girls 235 and Mixed 582)								
Government School Basic Facilities	Primary	Middle	High	Higher Sec	Total	Male	Female	Mixed
Useable Water	589	68	79	13	749 (69%)	207 (79%)	165 (70%)	377 (65%)
Useable Toilet	765	73	76	11	925 (86%)	237 (90%)	204 (87%)	484 (83%)
Rooms Available	--	--	--	--	--	--	--	--
Rooms used for classes	3295	375	915	216	4801 (Avg 4)	1393 (Avg 5)	1395 (Avg 6)	2013 (Avg 3)
Number of Schools with 1 or 2 classrooms	--	--	--	--	--	--	--	--
Availability of Playground	267	23	37	08	335 (31%)	71 (27%)	118 (50%)	146 (25%)
Availability of Boundary wall	728	75	69	13	885 (82%)	218 (83%)	210 (89%)	457 (79%)
Number of Schools with 1 Teacher	--	--	--	--	--	--	--	--
Number of Schools with 2 Teacher	--	--	--	--	--	--	--	--

District EDUCATION Budget for Schools FY 2009-10 to 2011-12 (Rs. Million) ⁵						
Financial Year	Allocation			Utilization		
	Current	Development	Total	Current	Development	Total
2009-10	2490.315	320.167	2810.482	1959.585 (79%)	319.927 (100%)	2279.512 (81%)
2010-11	2361.293	596.477	2957.770	2809.878 (119%)	595.497 (100%)	3405.375 (115%)
2011-12	3410.013	584.990	3995.003	-	-	-

Urgent Action and suggestions	
<ul style="list-style-type: none">Up-gradation of more primary schools to elementary and high schoolsEnsure quality learning is taking place in schools by reducing absenteeism of teachers & students, and regular monitoring by parents/SCEnsure adequate number of teachers in schools (high priority be given to 1 and 2 teacher schools)Ensure all schools have functional toilets, clean drinking water and boundary walls, especially for girlsIncrease district education budget as per requirements to ensure provision of missing facilities	

Note: -- data is not available

² Sources: ASER 2011 (Rural)

³ District Education Department Hyderabad (April 2012)

⁴ District Literacy Department Hyderabad (April 2012)

⁵ District Finance & Planning Department Hyderabad (April 2012)