

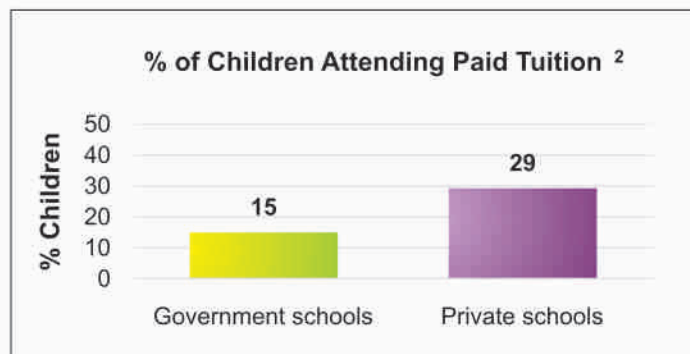
# District Report Card - Education

## Rawalpindi



Annual Status of Education Report  
**اثر**  
**ASER**  
**PAKISTAN**  
 Facilitated by SAFED  
**2011**

| Teachers <sup>3</sup> |         |        |      |            |              |
|-----------------------|---------|--------|------|------------|--------------|
|                       | Primary | Middle | High | Higher Sec | Total        |
| Sanctioned            | 5167    | 3743   | 7174 | 1279       | <b>17363</b> |
| Filled In             | 4425    | 2865   | 5778 | 922        | <b>13990</b> |
| Vacant                | 742     | 878    | 1396 | 357        | <b>3373</b>  |
| Contract              | 0       | 0      | 0    | 0          | <b>0</b>     |



| Non-formal Institutes <sup>4</sup>        | Number of centers |
|---|-------------------|
| Non Formal Basic Education (NFBE) Centers | 172               |
| Literacy Centers                          | -                 |
| <b>Total</b>                              | <b>172</b>        |

| Students/Teachers Attendance in Government Schools <sup>2</sup> |         |            |      |       |       |
|---|---------|------------|------|-------|-------|
|   | Primary | Elementary | High | Other | Total |
| % of student attendance as per head count                       | 84      | 84         | 88   | 89    | 86    |
| % of teacher attendance   | 87      | 83         | 93   | 79    | 89    |

| School Facilities <sup>3</sup><br>(Total Schools = 2324, Boys Schools = 110, Girls Schools = 1218) |         |        |      |            |               |               |        |
|--|---------|--------|------|------------|---------------|---------------|--------|
| Government School Basic Facilities   | Primary | Middle | High | Higher Sec | Total         | Male          | Female |
| Useable Water  | 1150    | 281    | 298  | 29         | 1758 (76%)    | 936           | 822    |
| Useable Toilet   | 1345    | 299    | 299  | 30         | 1973 (85%)    | 1010          | 963    |
| Rooms Available  | 4929    | 2292   | 3517 | 582        | 11320 (Avg 5) | Not Available |        |
| Number of Schools with 1 or 2 classrooms   | 798     | 10     | 2    | -          | 810 (35%)     | 349           | 461    |
| Availability of Playground   | 447     | 133    | 175  | 21         | 776 (33%)     | 493           | 283    |
| Availability of Boundary wall  | 1295    | 251    | 273  | 28         | 1847(79%)     | 901           | 946    |

| District Education Budget for Schools (Rs. Millions) <sup>5</sup> |  |  |   |                       |  |
|---|--|--|---|-----------------------|--|
| Financial Year  | Name of Scheme                                       | Allocation                                   |   | Utilization           |  |
|   |  | Total Allocation for school education sector | Total Utilization for school education sector | %age of fund Utilized |  |
| 2010-11   | School Education Sector                              | 342.000 million                              | 309.102 (90 % utilization)                    | 90 %                  |  |
| 2011-12   | Conversion of Existing High School into Model School | 127.500 million                              | 16.305 (13% utilization)                      | 13 %                  |  |
|   | Provision of Missing Facilities in Schools           | 197.500 million                              | 80.376 (41 % utilization)                     | 41%                   |  |

### Urgent Actions and Suggestions for All Stakeholders

- Ensure 100% enrollment of 4-10 years old girls & boys in schools on time, and at an appropriate age
- Ensure quality learning is taking place in schools by reducing absenteeism of teachers & students, and regular monitoring by parents/SC
- Ensure adequate number of teachers in schools (high priority be given to 1 and 2 teacher schools)
- Ensure all schools have functional toilets, clean drinking water and boundary walls, specially for girls
- Ensure active role of School Councils in making annual school development plans (SDPs) by mobilizing & utilizing funds in a transparent & timely manner

--: data is not available

<sup>2</sup> Sources: ASER (Rural) 2011

<sup>3</sup> District Education Department Rawalpindi (Feb 2012)

<sup>4</sup> District Literacy Department (Feb 2012)

<sup>5</sup> District Finance & Planning Department (Feb 2012)

# District Report Card - Education Rawalpindi



Annual Status of Education Report  
اثر  
**ASER**  
PAKISTAN  
2011  
Facilitated by SAFED

87% men and 71% women aged 10 years and older are literate in Rawalpindi. Overall, the district is ranked **02** among 37 districts on literacy indicator.<sup>1</sup>

## Enrollment

- **Children in the 3-5 age group:** 71% are enrolled (50% girls and 50% boys). Of this percentage, 59% children are enrolled in government schools and 41% in private educational facilities.<sup>2</sup>
- **Children in the 6 -16 age group:** 95% are enrolled (42% girls and 58% boys). Of this percentage, 68% children are enrolled in government schools and 34% in private educational facilities.<sup>2</sup>
- **Out-of-school children:** 05% children (6 -16 years) are not attending any school. Out of this number, 35% are girls and 65% boys.<sup>2</sup>

### Number of Government Schools<sup>3</sup>

|              | Primary     | Middle     | High       | Higher Sec | Total       |
|--------------|-------------|------------|------------|------------|-------------|
| Boys         | 773         | 134        | 183        | 16         | <b>1106</b> |
| Girls        | 881         | 184        | 139        | 14         | <b>1218</b> |
| <b>Total</b> | <b>1654</b> | <b>318</b> | <b>322</b> | <b>30</b>  | <b>2324</b> |

For every 5 primary Schools there is only 1 middle school.

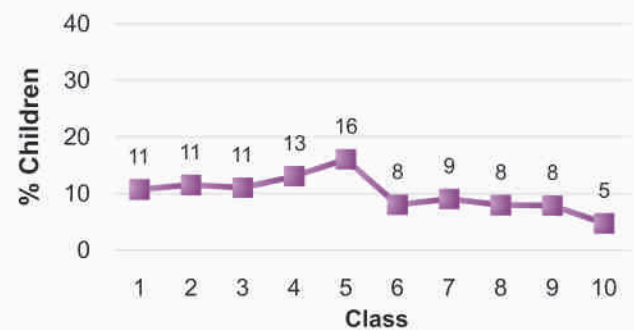
Where will the rest go?

### Enrollment in Government Schools<sup>3</sup>

|              | Primary       | Middle       | High          | Higher Sec   | Total         |
|--------------|---------------|--------------|---------------|--------------|---------------|
| Boys         | 53363         | 28685        | 71059         | 9605         | <b>162712</b> |
| Girls        | 59855         | 35800        | 73099         | 11334        | <b>180088</b> |
| <b>Total</b> | <b>113218</b> | <b>64485</b> | <b>144158</b> | <b>20939</b> | <b>342800</b> |

Of the 342,800 children enrolled in government schools, **only 53% are girls** (47% boys)

### Class Wise Enrollment<sup>2</sup>



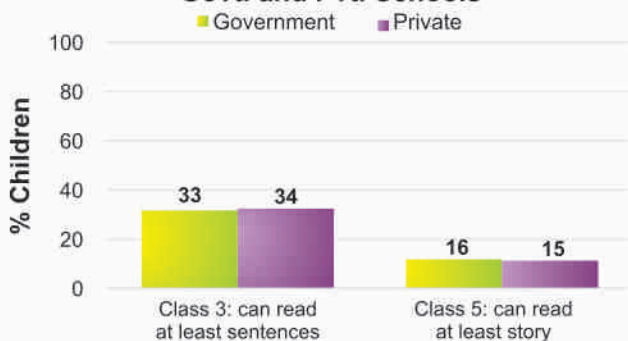
Enrollment drops significantly at middle, high and higher secondary level class

## Learning Levels (Rural)<sup>2</sup>

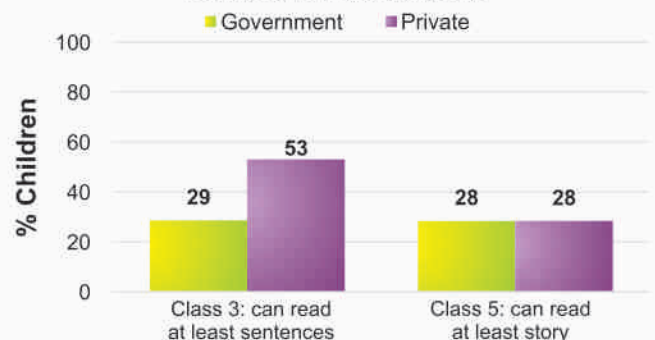
- 29% of class 3 students in government schools and 53% in private schools are able to read sentences in **Urdu**
- 33% of class 3 students in government schools and 34% in private schools are able to do simple **subtraction**
- 47% of class 3 students in government schools and 64% in private schools are able to read words in **English**

**Mother Literacy:** 64% illiterate and 36% literate

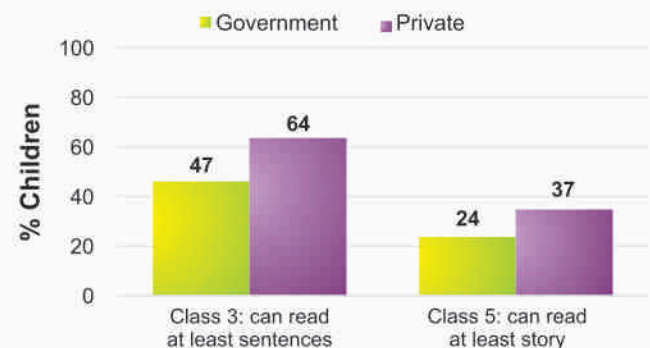
### Learning Levels - Arithmetic in Govt. and Pvt. Schools



### Learning Levels - Urdu in Govt. and Pvt. Schools



### Learning Levels - English in Govt. and Pvt. Schools



<sup>1</sup> Source: PSLM 2010 - 2011

<sup>2</sup> Source: Annual Status of Education Report – ASER (Rural) 2011

<sup>3</sup> Source: District Education Department Rawalpindi (Feb 2012)