



## Enrollment

- **Children in the 3-5 agegroups** : 29% are enrolled (39 % girls and 6 1% boys). Of this percentage 59% children are enrolled in government schools and 41% in private educational facilities.<sup>2</sup>
- **Children in the 6-16 agegroups** : 62% are enrolled (44 % girls and 5 6% boys). Of this percentage , 62% children are enrolled in government schools and 38% in private educational facilities.<sup>2</sup>
- **Out-of-school children:** 38% children (6-16 years) are not attending any school. Out of this number, 58 % are girls and 41% boys.<sup>2</sup>

Number of Government Schools <sup>3</sup>					
	Primary	Middle	High	Higher Secondary	Total
Boys	688	53	40	07	<b>788</b>
Girls	423	37	19	05	<b>484</b>
Mixed	-	-	-	-	-
<b>Total</b>	<b>1111</b>	<b>90</b>	<b>59</b>	<b>12</b>	<b>1272</b>

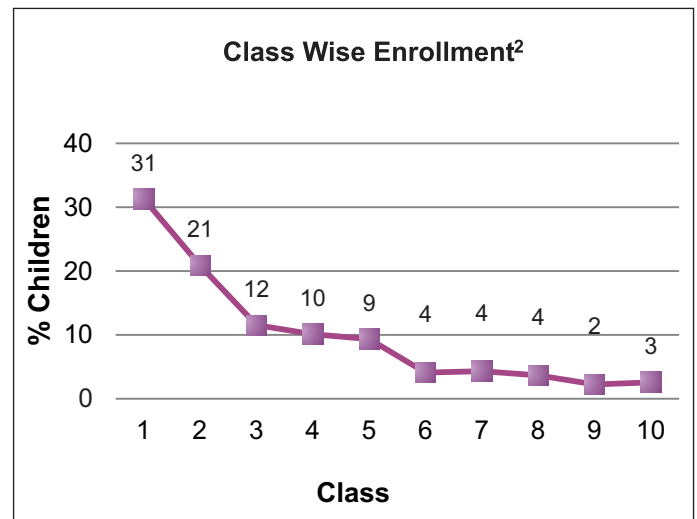
\*\* There are 106 Foundation Assisted Schools (PEF-FAS) under Punjab Education foundation (PEF), in addition to the 1272 Government schools<sup>4</sup>

For every 12 primary Schools there is only 1 Middle school.

**Where will the rest go?**

Enrollment in Government Schools <sup>3</sup>					
	Primary	Middle	High	Higher Sec	Total
Boys	68163	4332	22898	8392	<b>103785</b>
Girls	47615	1157	11700	4614	<b>65086</b>
<b>Total</b>	<b>115778</b>	<b>5489</b>	<b>34598</b>	<b>13006</b>	<b>168871</b>

Of the 168,871 children enrolled in government schools, **only 39% are girls** (61% boys)

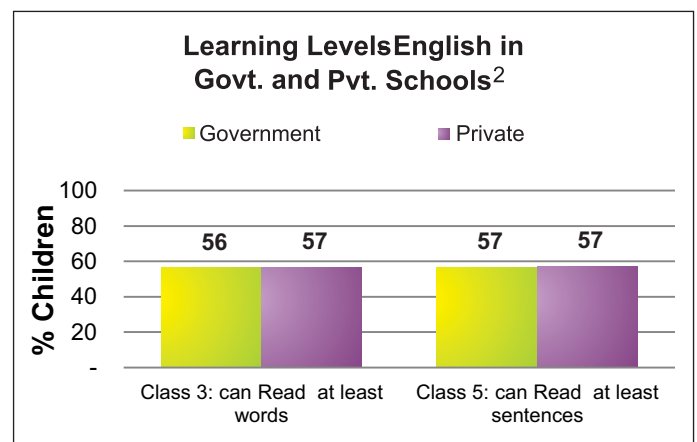
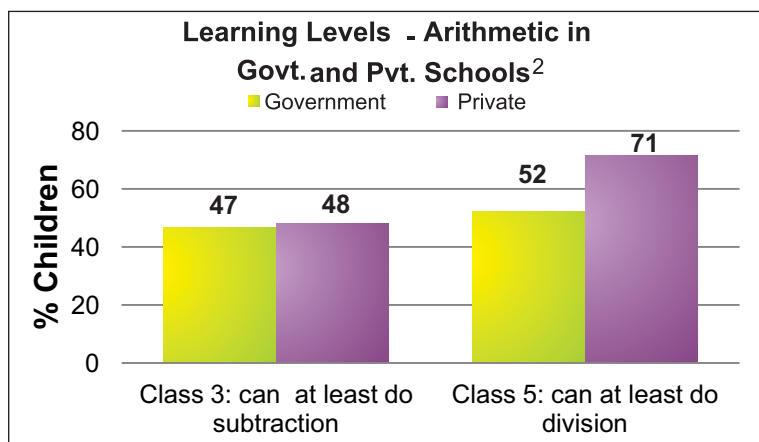
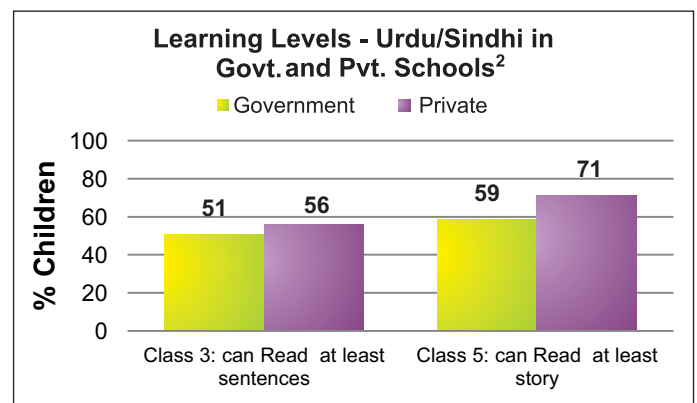


Enrollment drops significantly at middle, high and higher secondary level class

## Learning Levels (Rural)<sup>2</sup>

- 51% of class 3 students in government schools and 56% in private schools are able to read sentences in **Urdu**
- 47% of class 3 students in government schools and 48% in private schools are able to do simple **subtraction**
- 56% of class 3 students in government schools and 57% in private schools are able to read words in **English**

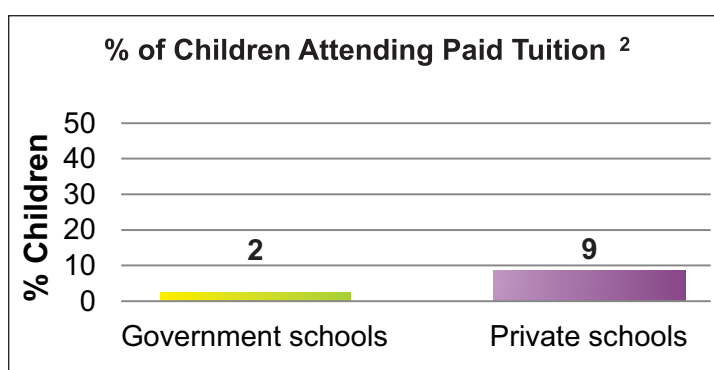
**Mother Literacy:** 82% illiterate and 18% literate



<sup>1</sup>Source: PSLM 2010 -2011 <sup>2</sup>Source: Annual Status of Education Report (ASER) 2011 <sup>3</sup>Source: District Education Department Rajanpur <sup>4</sup>Source: PEF



Teachers <sup>3</sup>					
	Primary	Middle	High	Higher Sec	Total
Sanctioned	2038	269	1147	469	<b>3923</b>
Filled In	1921	210	1012	373	<b>3516</b>
Vacant	117	06	135	96	<b>354</b>
Contract	44	19	-	-	<b>63</b>



Non-formal Institutes <sup>4</sup>	Number of centers
Non Formal Basic Education (NFBE) Centers	-
Literacy Centers	-
<b>Total</b>	<b>-</b>

School Facilities <sup>3</sup> (Total Schools =1272, Boys school=788 and Girls school= 484.)							
Government School Basic Facilities	Primary	Middle	High	Higher Sec	Total	Male	Female
Useable Water	840	90	55	12	997 (78%)	<u>615</u> (78%)	<u>382</u> (79%)
Useable Toilet	827	97	59	12	995 (78%)	<u>600</u> (76%)	<u>395</u> (82%)
Rooms Available	955	90	59	12	1116 (Avg 1)	<u>632</u> (80%)	<u>484</u> (100%)
Rooms used for classes	778	90	59	12	939 (Avg 1)	<u>455</u> (58%)	<u>484</u> (100%)
Number of Schools with 1 or 2 classrooms	692	-	-	-	692 (54%)	<u>386</u> (49%)	<u>306</u> (63%)
Availability of Playground	-	-	59	12	71 (6%)	<u>47</u> (6%)	<u>24</u> (5%)
Availability of Boundary wall	891	47	55	12	1005 (79%)	<u>576</u> (73%)	<u>429</u> (89%)

District Education Budget for Schools (Rs. Million) <sup>5</sup>						
Financial Year	Allocation			Utilization		
	Current	Development	Total	Current	Development	Total
2009-10	480.113	22.611	502.724	406.601 (85%)	18.944 (84%)	425.545 (85%)
2010-11	820.547	22.851	843.398	466.180 (57%)	14.440 (63%)	480.620 (57%)
2011-12	1206.086	64.033	1270.119	**521.435 (43%)	**50.009 (78%)	**571.444 (45%)

\*\* In Process

### Urgent Action and Suggestions

- Ensure 100% enrollment of 4-10 years old girls & boys in schools on time, and at an appropriate age
- Ensure quality learning is taking place in schools by reducing absenteeism of teachers & students, and regular monitoring by parents/SC
- Ensure adequate number of teachers in schools (high priority be given to 1 and 2 teacher schools)
- Encourage public-Private participation for school teacher's capacity building trainings
- Increase district education budget as per requirements to ensure provision of missing facilities

Note: -- data is not available

<sup>2</sup> Sources: ASER 2011 <sup>3</sup>District Education Department Rajanpur <sup>4</sup>District Literacy Department <sup>5</sup>District Finance & Planning Department