

District Report Card - Education

Mianwali



Annual Status of Education Report
اثر
ASER
PAKISTAN
2011
 Facilitated by SAFED

78 % men and 46% women aged 10 years and older are literate in Mianwali. Overall, the district is ranked **14** among 36 districts on literacy indicator.¹

Enrollment

- **Children in the 3-5 age group:** 54% are enrolled (51% girls and 49% boys). Of this percentage, 58% children are enrolled in government schools and 42% in private educational facilities.²
- **Children in the 6 - 16 age group:** 90% are enrolled (40% girls and 60% boys). Of this percentage, 71% children are enrolled in government schools and 29% in private educational facilities.²
- **Out-of-school children:** 10% children (6 -16 years) are not attending any school. Out of this number, 64% are girls and 36% boys.²

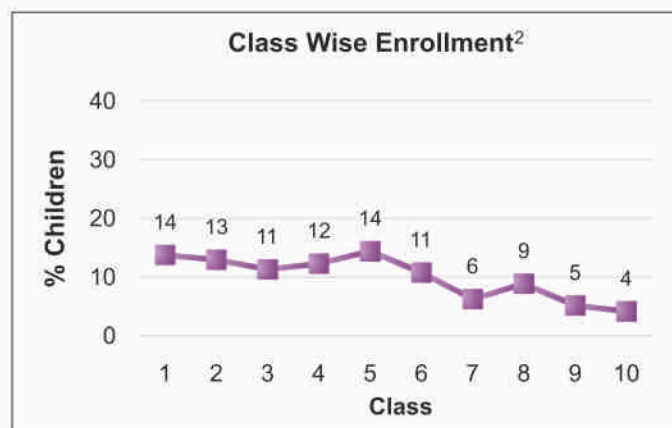
Number of Government Schools ³					
	Primary	Middle	High	Higher Secondary	Total
Boys	438	83	65	8	594
Girls	693	64	30	5	792
Mixed	-	-	-	-	-
Total	1131	147	95	13	1386

** There are 12 Foundation Assisted Schools (PEF-FAS) under Punjab Education foundation (PEF), in addition to the 2091 Government schools⁴

For every 8 primary Schools there is only 1 Middle school.
Where will the rest go?

Enrollment in Government Schools ³					
	Primary	Middle	High	Higher Sec	Total
Boys	73066	9882	41995	2832	127775
Girls	61717	3992	21803	2043	89555
Total	134783	13874	63798	4875	217330

Of the 217330 children enrolled in government schools, **only 41% are girls** (59% boys)

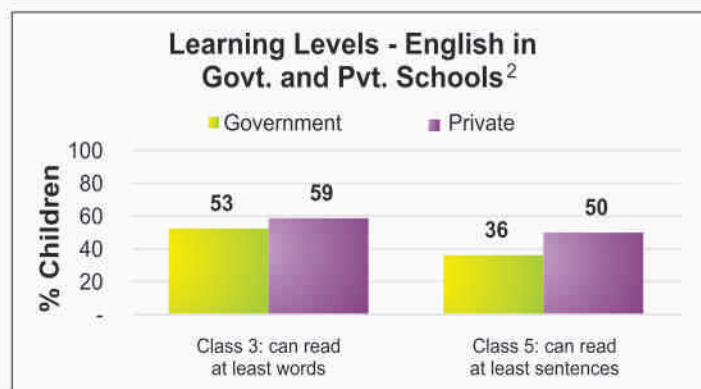
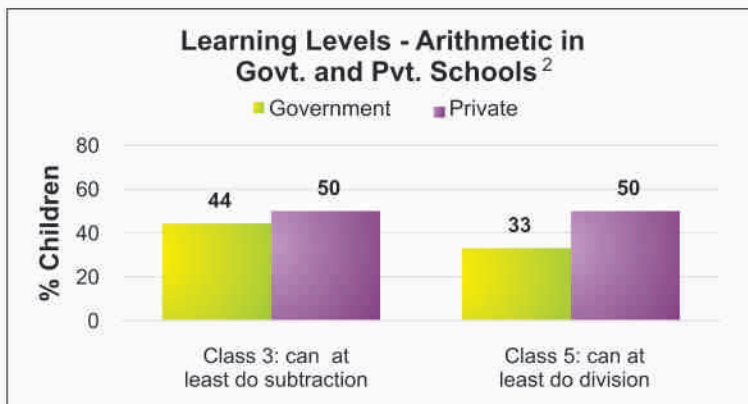
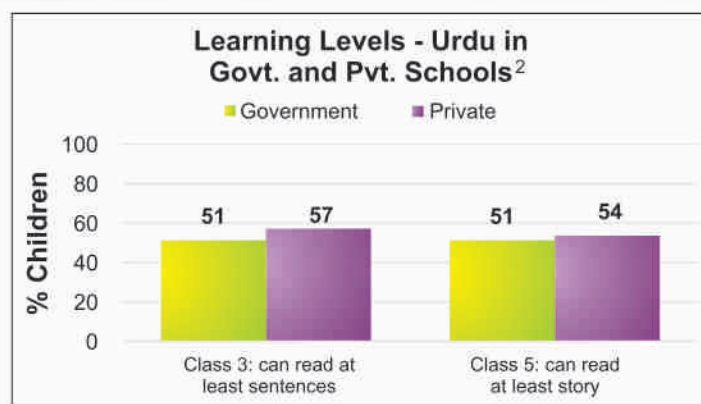


Enrollment drops significantly at middle, high and higher secondary level class

Learning Levels (Rural)²

- 51% of class 3 students in government schools and 57% in private schools are able to read sentences in **Urdu**
- 44% of class 3 students in government schools and 50% in private schools are able to do simple **subtraction**
- 53% of class 3 students in government schools and 59% in private schools are able to read words in **English**

Mother Literacy: 53% illiterate and 47% literate



¹ Source: PSLM 2010 - 2011 ² Source: Annual Status of Education Report - ASER (Rural) 2011

³ Source: District Education Department Mianwali (Feb 2012)

⁴ Source: PEF (Feb 2012)

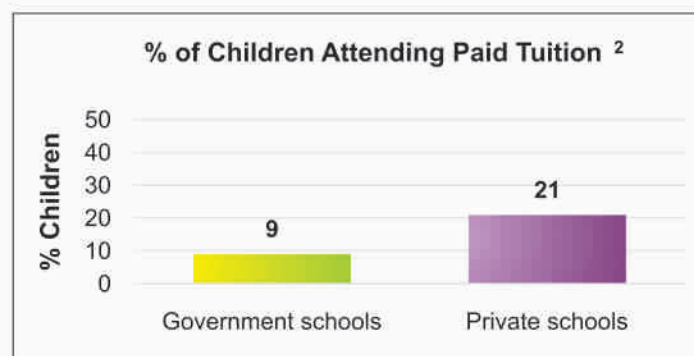
District Report Card - Education

Mianwali



Annual Status of Education Report
اثر
ASER
PAKISTAN
 Facilitated by SAFED
2011

Teachers ³					
	Primary	Middle	High	Higher Sec	Total
Sanctioned	4421	2188	755	77	7441
Filled In	3973	1819	626	28	6446
Vacant	448	369	129	49	995
Contract	-	-	-	-	-



Non-formal Institutes ⁴	Number of centers
Non Formal Basic Education (NFBE) Centers	204
Literacy Centers	200
Total	404

Students/Teachers Attendance in Government Schools ²

	Primary	Elementary	High	Other	Total
% of student attendance as per head count	78	82	79	82	80
% of teacher attendance	86	92	88	85	87

School Facilities ³
 (Total Schools = 1386, Boys School=594 and Girls School=792)

Government School Basic Facilities	Primary	Middle	High	Higher Sec	Total	Male	Female
Useable Water	1096	147	95	13	1351(97%)	581	769
Useable Toilet	1089	147	95	13	1344(97%)	579	765
Rooms required for classes	80	0	0	0	80	48	32
Electricity Required	55	0	0	0	55	21	24
Number of Schools with 1 or 2 classrooms	229	0	0	0	229(17%)	107	122
Availability of Playground	0	37	95	13	145(10%)	93	52
Availability of Boundary wall	1102	145	95	13	1355(98%)	19	12

District Education Budget for Schools FY 2009-10 to 2011-12 (Rs. Millions) ⁵

Financial Year	Allocation			Utilization		
	Current	Development	Total	Current	Development	Total
2009-10	1591.25	214.179	1805.429	1591.25 (100%)	149.9253(70%)	1741.175(96%)
2010-11	2075.31	112.103	2187.413	2075.31(100%)	75.66952(67%)	2150.979(98%)
2011-12	3078.49	179	3257.49	2154.94(70%)*	73.748(41%)*	2228.691(68%)*

* In process

Urgent Action and Suggestions

- Ensure 100% enrollment of 4-10 years old girls & boys in schools on time, and at an appropriate age
- Ensure quality learning is taking place in schools by reducing absenteeism of teachers & students, and regular monitoring by parents/SC
- Ensure adequate number of teachers in schools (high priority be given to 1 and 2 teacher schools)
- Ensure all schools have functional toilets, clean drinking water and boundary walls, specially for girls
- Ensure active role of School Councils in making annual school development plans (SDPs) by mobilizing & utilizing funds in a transparent & timely manner

--: data is not available

² Sources: ASER 2011

³ District Education Department Mianwali (Feb 2012)

⁴ District Literacy Department (Feb 2012)

⁵ Annual Budget Book + Development Branch (Feb 2012)