

District Report Card - Education Lodhran



Annual Status of Education Report
اثر
ASER 2011
PAKISTAN
Facilitated by SAFED

59% male and 34% female aged 10 years and older are literate in Lodhran. Overall, the district is ranked **31** among 36 districts on literacy indicator.¹

Enrollment

- **Children in the 3-5 age group:** 40% are enrolled (45% girls and 55% boys). Of this percentage 51% children are enrolled in government schools and 49% in private educational facilities.²
- **Children in the 6-16 age group:** 70% are enrolled (41% girls and 59% boys). Of this percentage 52% children are enrolled in government schools and 48% in private educational facilities.²
- **Out-of-school children:** 30% children (6-16 years) are not attending any school. Out of this number, 60% are girls and 40% boys.²

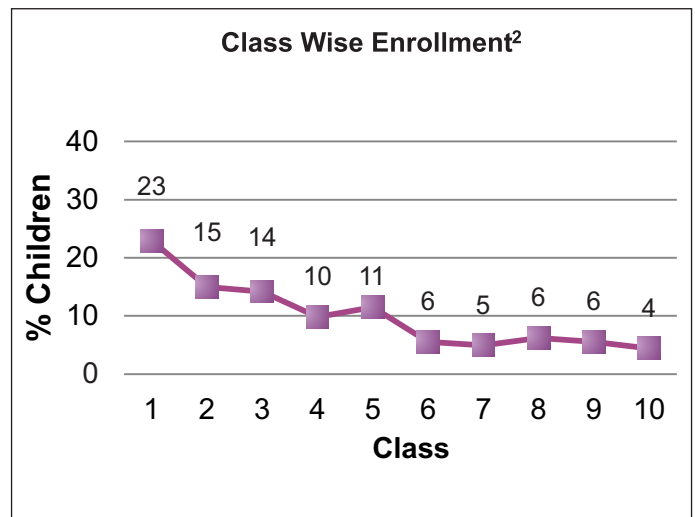
Number of Government Schools ³					
	Primary	Middle	High	Higher Secondary	Total
Boys	251	67	53	3	374
Girls	358	81	21	6	466
Mixed	44	-	-	-	44
Total	653	148	74	9	884

** There are 117 Foundation Assisted Schools (PEF FAS) under Punjab Education foundation (PEF), in addition to the 884 Government schools⁴

For every 4 Primary School there is only 1 middle Government school³ · **Where will the rest go?**

Enrollment in Government Schools ³					
	Primary	Middle	High	Higher Sec	Total
Boys	36,275	17,934	26,740	1,643	82,592
Girls	28,143	16,365	14,164	5,753	64,425
Total	64,418	34,299	40,904	7,396	147,017

Of the 147017 children enrolled in government schools, **44% are girls** and (56% boys)³

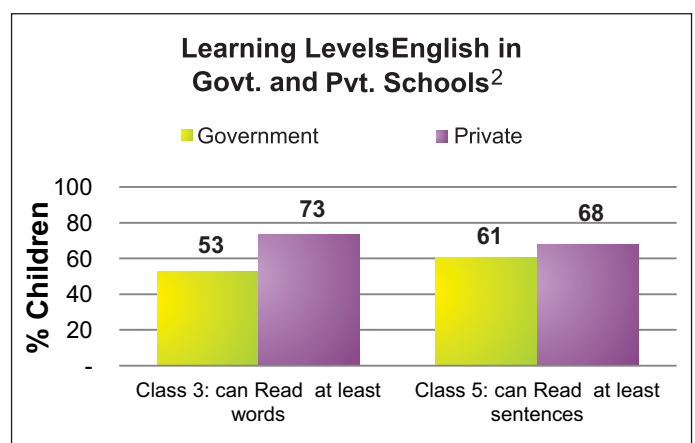
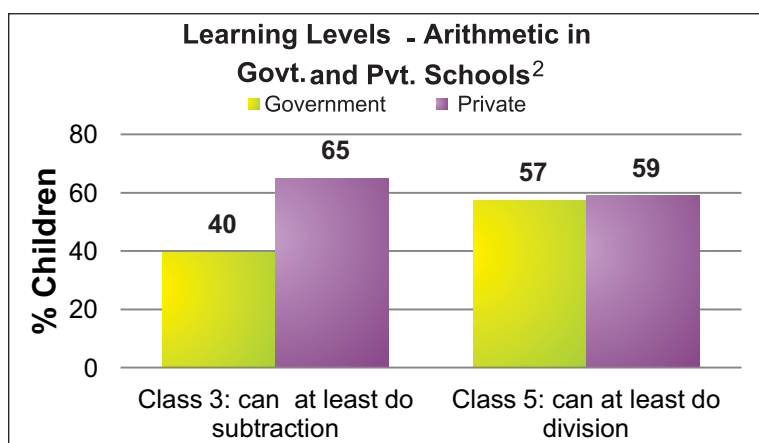
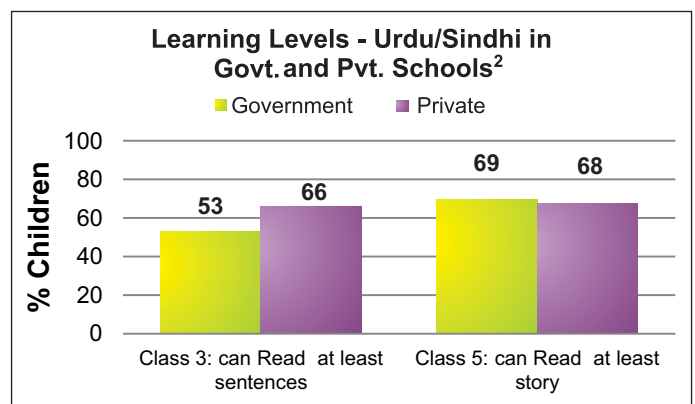


Enrollment drops significantly at middle, high and higher secondary level class

Learning Levels (Rural)²

- 53% of class 3 students in government schools and 66% in private schools are able to read sentences in **Urdu**
- 40% of class 3 students in government schools and 65% in private schools are able to do simple **subtraction**
- 53% of class 3 students in government schools and 73% in private schools are able to read words in **English**

Mother Literacy: 64% illiterate and 36% literate

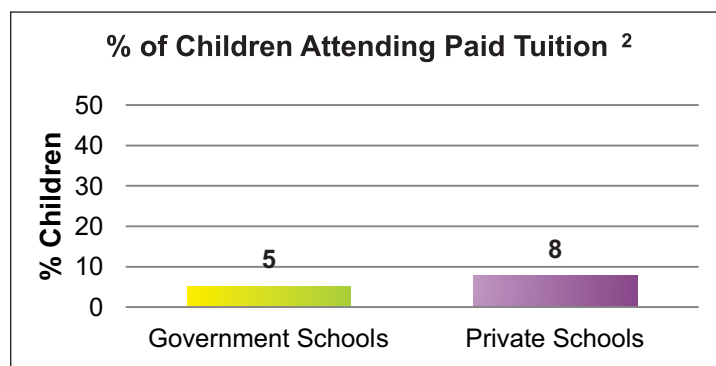


¹Source: PSLM 2010-2011 ²Source: Annual Status of Education Report (ASER) 2011-Rural ³Source: District Education Department Lodhran

⁴Source: PEF



Teachers ³					
	Primary	Middle	High	Higher Sec	Total
Sanctioned	2003	1132	1574	474	5183
Filled In	1841	910	1448	354	4553
Vacant	162	222	126	120	630
Contract	-	-	-	-	



Non-formal Institutes ⁴	Number of centers
Non Formal Basic Education (NFBE) Centers	200
Literacy Centers	600
Total	800

Students/Teachers Attendance in Government Schools ²					
	Primary	Elementary	High	Other	Total
% of student attendance as per head count	71	85	85	-	83
% of teacher attendance	88	83	85	-	84

School Facilities (Total Schools =884, Boys school=374 and Girls school= 466, Mixed=44)								
Government School Basic Facilities	Primary	Middle	High	Higher Sec	Total	Male	Female	Mixed
Useable Water	624	143	69	9	845 (96%)	374 (100%)	466(100%)	26 (59%)
Useable Toilet	615	141	66	9	831 (94%)	370(99%)	461(99%)	32 (73%)
Rooms Available	1668	888	837	160	3553 (Avg 4)	1857(Avg 5)	1696(Avg 4)	113 (Avg 3)
Rooms used for classes	1668	888	837	160	3553 (Avg 4)	1857(Avg 5)	1696(Avg 4)	113 (Avg 3)
Number of Schools with 1 or 2 classrooms	376	-	-	-	376 (43%)	110(29%)	266(57%)	24 (55%)
Availability of Playground	326	102	53	9	490 (55%)	236(63%)	254(55%)	21 (48%)
Availability of Boundary wall	432	143	67	9	651 (74%)	364 (97%)	287(92%)	33 (75%)

District Education Budget for Schools Fy 2009-10 to 2011-12 (Rs. Million) ⁵						
Financial Year	Allocation			Utilization		
	Current	Development	Total	Current	Development	Total
2009-10	504.590	207.582	712.172	410.380(81%)	156.596(75%)	566.976(80%)
2010-11	660.775	166.143	826.918	505.622(77%)	108.906(66%)	614.528(74%)
2011-12	805.825	170.722	976.547	690.810(86%)*	82.311(48%)*	773.121(79%)*

* in process

Urgent Action and Suggestions	
<ul style="list-style-type: none"> • Ensure 100% enrollment of 4-10 years old girls & boys in schools on time, and at an appropriate age • Ensure adequate number of teachers in schools (high priority be given to 1 and 2 teacher schools) • Ensure all schools have functional toilets, clean drinking water and boundary walls, specially for girls 	

Note: -- data is not available

²Sources: ASER 2011 (Rural) ³District Education Department Lodhran (Feb 2012) ⁴District Literacy Department

⁵District Finance & Planning Department