

# District Report Card - Education Lahore



Annual Status of Education Report  
**اثر**  
**ASER**  
PAKISTAN  
Facilitated by SAFED  
**2011**

80% men and 73% women aged 10 years and older are literate in Lahore. Overall, the district is ranked 4 among 37 districts on literacy indicator.<sup>1</sup>

## Enrollment

- **Children in the 3-5 age group:** 61% are enrolled (49% girls and 51% boys). Of this percentage, 46% children are enrolled in government schools and 54% in private educational facilities.<sup>2</sup>
- **Children in the 6-16 age group:** 85% are enrolled (45% girls and 55% boys). Of this percentage, 56% children are enrolled in government schools and 44% in private educational facilities.<sup>2</sup>
- **Out-of-school children:** 15% children (6-16 years) are not attending any school. Out of this number, 45% are girls and 55% boys.<sup>2</sup>

### Number of Government Schools<sup>3</sup>

	Primary	Middle	High	Higher Secondary	Total
Boys	119	35	132	05	<b>291</b>
Girls	73	32	91	11	<b>207</b>
Mixed	464	147	100	01	<b>712</b>
<b>Total</b>	<b>656</b>	<b>214</b>	<b>323</b>	<b>17</b>	<b>1210</b>

\*\* There are 19 Foundation Assisted Schools (PEF-FAS) under Punjab Education foundation (PEF), in addition to the 1210 Government schools<sup>4</sup>

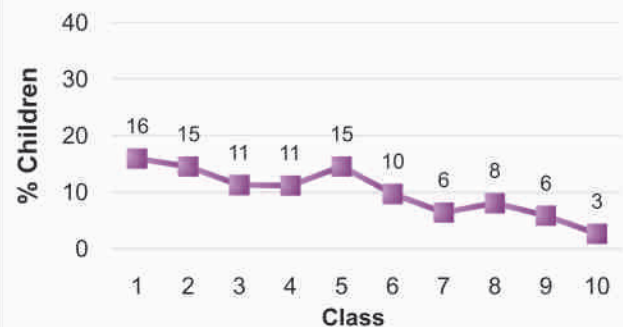
For every 3 primary schools there is only 1 middle school.

### Enrollment in Government Schools<sup>3</sup>

	Primary	Middle	High	Higher Sec	Total
Boys	71,434	47,043	133,336	6,935	<b>258,748</b>
Girls	46,753	55,004	179,715	21,780	<b>303,252</b>
<b>Total</b>	<b>118,187</b>	<b>102,047</b>	<b>313,051</b>	<b>28,715</b>	<b>562,000</b>

Of the 562,000 children enrolled in government schools, 54% are girls (46% boys)

### Class Wise Enrollment<sup>2</sup>



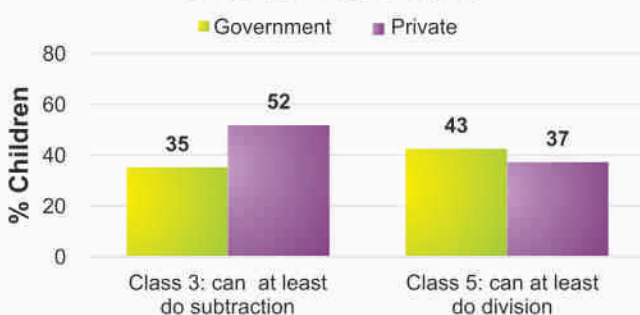
Enrollment drops significantly at middle, high and higher secondary level class

## Learning Levels (Rural)<sup>2</sup>

- 47% of class 3 students in government school and 62% in private schools are able to read sentences in **Urdu**
- 35% of class 3 students in government schools and 52% in private schools are able to do simple **subtraction**
- 55% of class 3 students in government schools and 72% in private schools are able to read words in **English**

**Mother Literacy:** 53% illiterate and 47% literate

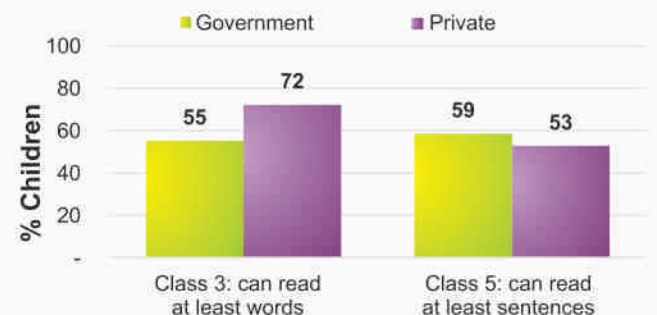
### Learning Levels - Arithmetic in Govt. and Pvt. Schools



### Learning Levels - Urdu in Govt. and Pvt. Schools



### Learning Levels - English in Govt. and Pvt. Schools



<sup>1</sup>Source: PSLM 2010-2011    <sup>2</sup>Source: Annual Status of Education Report – ASER (Rural) 2011

<sup>3</sup>Source: District Education Department Lahore (Feb 2012)    <sup>4</sup>Source: PEF (Feb 2012)

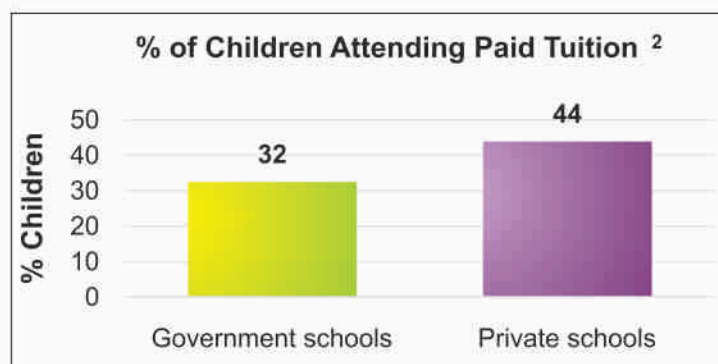
# District Report Card - Education

## Lahore



Annual Status of Education Report  
**اثر**  
**ASER**  
**PAKISTAN**  
 Facilitated by SAFED  
**2011**

Teachers <sup>3</sup>					
	Primary	Middle	High	Higher Sec	Total
Sanctioned	3121	3237	10434	1100	<b>17892</b>
Filled In	2493	2737	8911	1021	<b>15162</b>
Vacant	628	500	1523	79	<b>2730</b>
Contract	0	0	0	0	<b>0</b>



Non-formal Institutes <sup>4</sup>	Number of centers
Non Formal Basic Education (NFBE) Centers	264
Literacy Centers	207
<b>Total</b>	<b>471</b>

**Students/Teachers Attendance in Government Schools <sup>2</sup>**

	Primary	Elementary	High	Other	Total
% of student attendance as per head count	<b>81</b>	93	98	80	84
% of teacher attendance	<b>77</b>	96	75	88	84

**School Facilities <sup>3</sup>**  
*(Total Schools without Masjid Maktab school = 1210, Boys schools = 291 and Girls schools = 207, Mixed schools = 712)*

Government School Basic Facilities	Primary	Middle	High	Higher Sec	Total	Male	Female
Useable Water	647	211	319	17	1194(99%)	609 (99%)	585(99%)
Useable Toilet	640	212	322	17	1191(98%)	608 (98%)	583(98%)
Rooms Available	2786	2075	5560	507	10928(Avg 9)	5270 (Avg 9)	5658 (Avg 10)
Rooms used for classes	--	--	--	--	--	--	--
Number of Schools with 1 or 2 classrooms	301	08	02	00	311(26%)	150(24%)	161(27%)
Single Teacher School	125	3	0	0	128 (11%)	54 (9%)	74 (13%)
Availability of Playground	225	71	147	15	458(38%)	257 (42%)	201(34%)
Availability of Boundary wall	633	209	320	17	1179(97%)	593 (96%)	586(99%)

**District Education Budget for Schools FY 2009-10 to 2011-12 (Rs. Millions) <sup>5</sup>**

Financial Year	Allocation			Utilization		
	Current	Development	Total	Current	Development	Total
2009-10	1411.336	4445.152	<b>5856.488</b>	1030.114 (73%)	4445.156(100%)	<b>5475.27 (93%)</b>
2010-11	369.157	6465.391	<b>6834.548</b>	84.589 (23%)	5716.609 (88%)	<b>5801.198 (85%)</b>
2011-12	920.382	6521.246	<b>7441.628</b>	463.833 (50%)*	2610.118 (40%)*	<b>3073.951(41%)*</b>

\*in process

### Urgent Action and Suggestions

- Ensure 100% enrollment of 4-10 years old girls & boys in schools on time, and at an appropriate age
- Ensure quality learning is taking place in schools by reducing absenteeism of teachers & students, and regular monitoring by parents/SC
- Ensure adequate number of teachers in schools (high priority be given to 1 and 2 teacher schools)
- Ensure all schools have functional toilets, clean drinking water and boundary walls, specially for girls

--: data is not available

<sup>2</sup> Source: ASER (Rural) 2011

<sup>3</sup> Source: District Education Department Lahore (Feb 2012)

<sup>4</sup> Source: District Literacy Department (Feb 2012)

<sup>5</sup> Source: District Finance & Planning Department (Feb 2012)