

District Report Card - Education

Faisalabad



Annual Status of Education Report
اثر
ASER
PAKISTAN
2011
 Facilitated by SAFED

72% men and 60% women aged 10 years and older are literate in Faisalabad. Overall, the district is ranked **09** among 37 districts on literacy indicator.¹

Enrollment

- **Children in the 3-5 age group:** 55% are enrolled (46% girls and 54% boys). Of this percentage, 61% children are enrolled in government schools and 39% in private educational facilities.²
- **Children in the 6 -16 age group :** 88% are enrolled (39% girls and 61% boys). Of this percentage, 70% children are enrolled in government schools and 30% in private educational facilities.²
- **Out-of-school children:** 12% children (6 -16 years) are not attending any school. Out of this number, 53% are girls and 47% boys.²

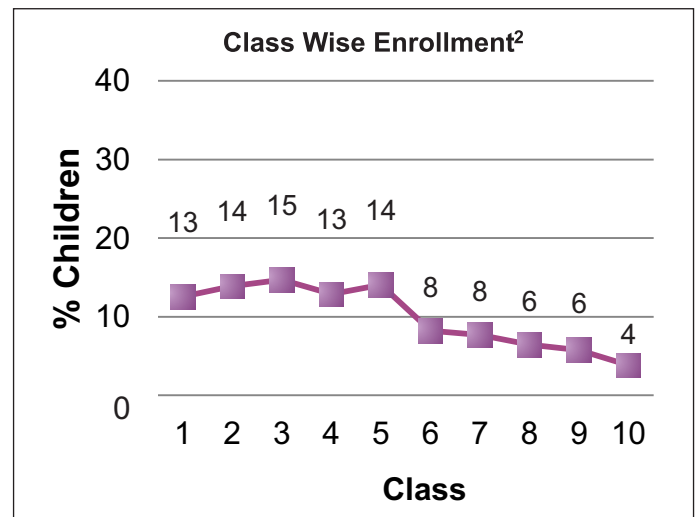
Number of Government Schools ³								
	Primary	Middle	High	Higher Secondary	Sub Total	junior branches with male school	junior branches with female school	Total
Boys	426	150	206	22	804	118	236	1158
Girls	307	284	223	36	850	180	127	1157
Mixed	-	-	-	-	-			
Total	733	434	429	58	1654	298	363	2315

For every 1 primary school there is 1 Middle school.

Where will the rest go?

Enrollment in Government Schools ³					
	Primary	Middle	High	Higher Sec	Total
Boys	224,029	100,650	55,398	3,543	383,620
Girls	245,984	87,879	44,309	5,905	384,077
Total	470,013	188,529	99,707	9,448	767,697

Of the 767,697 children enrolled in government schools, **50% are girls** (50% boys)

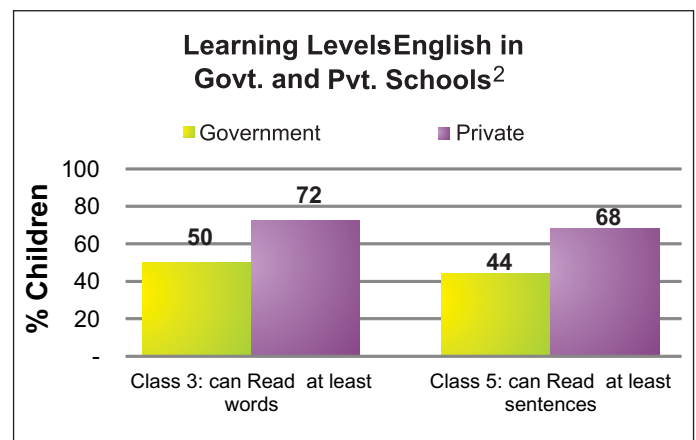
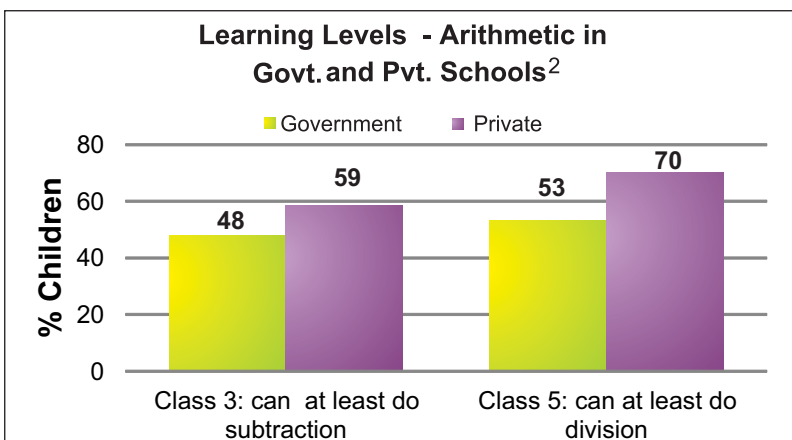
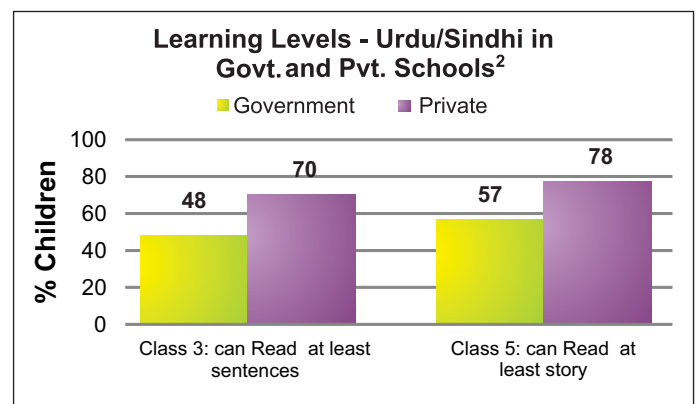


Enrollment drops significantly at middle, high and higher secondary level class

Learning Levels (Rural)²

- 48% of class 3 students in government schools and 70% in private schools are able to read sentences in **Urdu**
- 48% of class 3 students in government schools and 59% in private schools are able to do simple **subtraction**
- 50% of class 3 students in government schools and 72% in private schools are able to read words in **English**

Mother Literacy: 47% illiterate and 53% literate



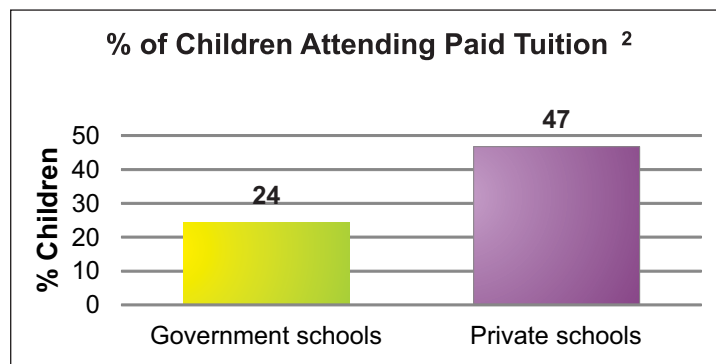
¹Source: PSLM 2010-2011

² Source: Annual Status of Education Report – ASER (Rural) 2011

³Source: District Education Department Faisalabad (Oct 2012)



Teachers ³				
	Primary	Middle	High/Higher Sec	Total
Sanctioned	10,506	7,326	4,058	21,890
Filled In	10,204	7,011	3,626	20,841
Vacant	302	315	432	1049
Contract	438	209	-	647



Non-formal Institutes ⁴	Number of centers
Non Formal Basic Education (NFBE) Centers	22
Literacy Centers	--
Total	22

Students/Teachers Attendance in Government Schools ³					
	Primary	Elementary	High	Other	Total
% of student attendance as per head count	90	93	92	-	92
% of teacher attendance	91	90	92	-	91

School Facilities ³ (Total Schools =2315 [Boys schools= 1158 and Girls schools=1157])							
Government School Basic Facilities	Primary	Middle	High	Higher Sec	Total	Male	Female
Useable Water	1371	479	409	56	2315 (100%)	1158	1157
Useable Toilet	1316	460	393	54	2223 (96%)	1112	1111
Rooms Available	1300	460	415	54	2229 (Avg 1)	1115	1114
Rooms used for classes	1300	460	400	54	2214 (Avg 1)	1107	1107
Number of Schools with 1 or 2 classrooms	--	--	--	--	--	--	--
Availability of Playground	1028	359	307	42	1736 (75%)	868	867
Availability of Boundary wall	1261	440	376	52	2129 (92%)	1065	1064

District Education Budget for Schools FY 2009-10 to 2011-12 (Rs. Millions) ⁵						
Financial Year	Allocation			Utilization		
	Current	Development	Total	Current	Development	Total
2009-10	--	447.700	447.700	--	266.615 (60%)	266.615(60%)
2010-11	--	813.179	813.179	--	579.169 (71%)	579.169 (71%)
2011-12	--	296.250	296.250	--	185.084 (62%)	85.084 (62%)
2012-13	9,100.596	233.264	9,333.860	--	--	--

Urgent Action and Suggestions
<ul style="list-style-type: none"> • Ensure 100% enrollment of 4-10 years old girls & boys in schools on time, and at an appropriate age • Ensure quality learning is taking place in schools by reducing absenteeism of teachers & students, and regular monitoring by parents/SC • Ensure adequate number of teachers in schools • Ensure all schools have functional toilets, clean drinking water and boundary walls, specially for girls

Note: -- data is not available

² Sources: ASER (Rural) 2011

³ District Education Department Faisalabad (Oct 2012)

⁴ District Literacy Department (Oct 2012)

⁵ District Finance & Planning Department (Oct 2012)