

District Report Card - Education

Mardan



Annual Status of Education Report
اثر
ASER
PAKISTAN
 Facilitated by SAFED
2011

65% men and 31% women aged 10 years and older are literate in Mardan. Overall, the district is ranked **16** among 24 districts on literacy indicator.¹

Enrollment (Rural)

- **Children in the 3 - 5 age group** : 37% are enrolled (41% girls and 59% boys). Of this percentage, 66% children are enrolled in government schools and 34% in private educational facilities.²
- **Children in the 6 - 16 age group**: 86% are enrolled (41% girls and 59% boys). Of this percentage, 81% children are enrolled in government schools and 19% in private educational facilities.²
- **Out-of-school children**: 14% children (6-16 years) are not attending any school. Out of this number, 67% are girls and 33% boys.²

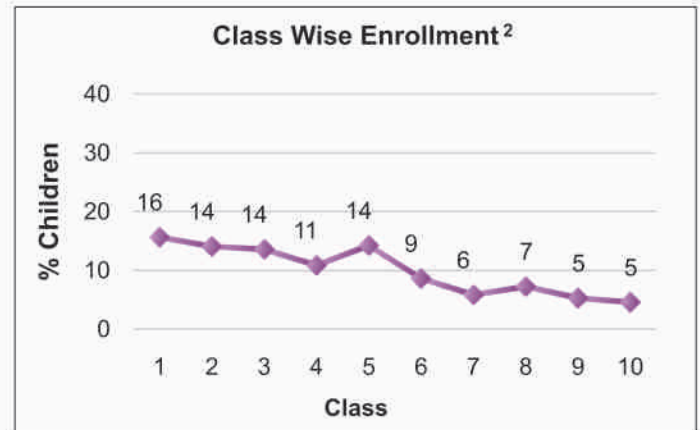
Number of Government Schools ³					
	Primary	Middle	High	Higher Secondary	Total
Boys	776	89	69	16	950
Girls	548	94	42	10	694
Mixed	-	-	-	-	-
Total	1324	183	111	26	1644

For every 7 primary Schools there is only 1 middle school.

Where will the rest go?

Enrollment in Government Schools ³					
	Primary	Middle	High	Higher Sec	Total
Boys	142,927	13,016	34,866	15,447	206,256
Girls	92,098	8,715	18,266	11,196	130,275
Total	235,025	21,731	53,132	26,643	336,531

Of the 336,531 children enrolled in government schools, **39% are girls** (61% boys)

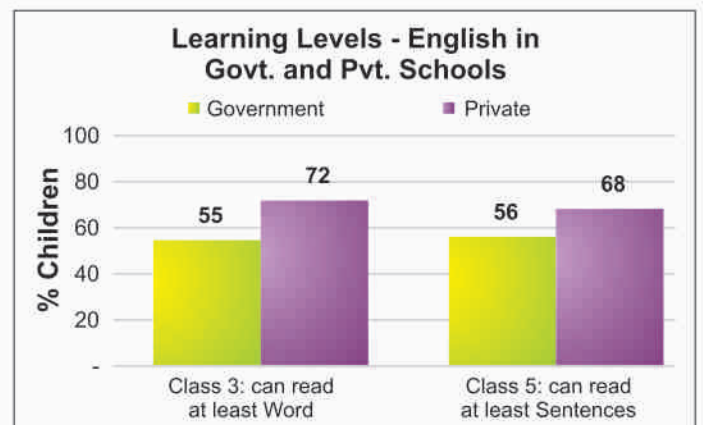
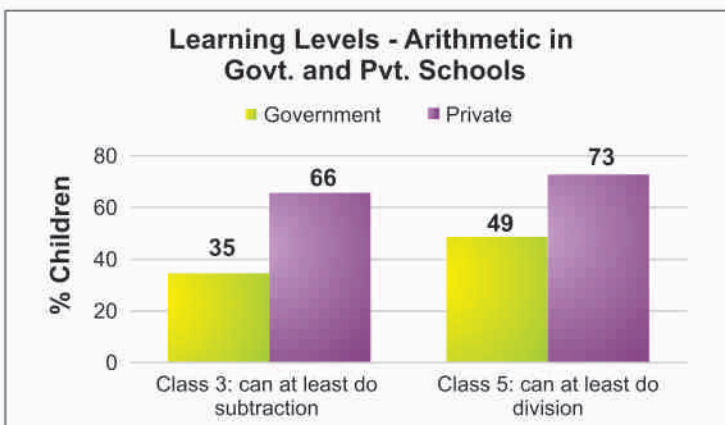
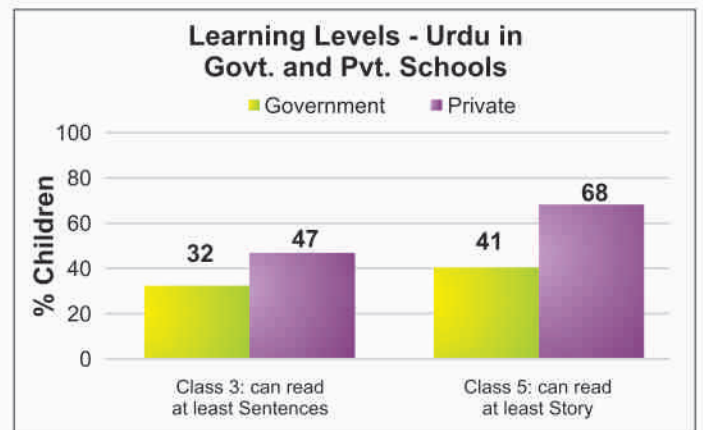


Enrollment drops as significantly at middle, high and higher secondary level class

Learning Levels (Rural)²

- 32% of class 3 students in government schools and 47% in private schools are able to read sentences in **Urdu**
- 35% of class 3 students in government schools and 66% in private schools are able to do simple **subtraction**
- 55% of class 3 students in government schools and 72% in private schools are able to read words in **English**

Mother Literacy: 59% illiterate and 41% literate



¹Source: PSLM 2010 -2011

²Source: Annual Status of Education Report (ASER) 2011

³Source: District Education Department Mardan (Feb 2012)

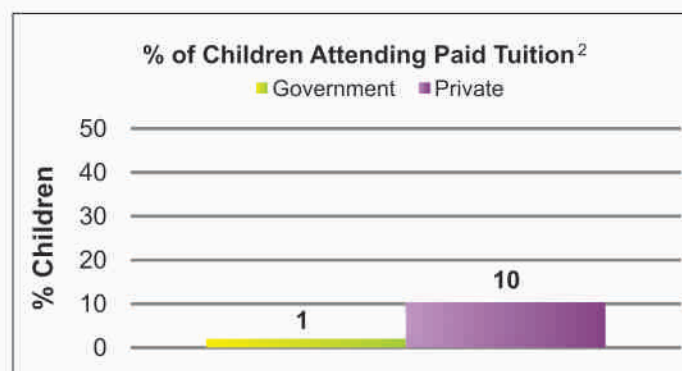
District Report Card - Education

Mardan



Annual Status of Education Report
اثر
ASER
PAKISTAN
2011
 Facilitated by SAFED

Teachers ³					
	Primary	Middle	High	Higher Sec	Total
Sanctioned	6131	1144	1626	781	9682
Filled In	5799	1108	1590	745	9242
Vacant	332	36	36	36	440
Contract	-	-	-	-	-



Non-formal Institutes ⁴	Number of centers
Non Formal Basic Education (NFBE) Centers	--
Literacy Centers	--
Total	--

Students/Teachers Attendance in Government Schools ²					
	Primary	Elementary	High	Other	Total
% of student attendance as per head count	90	100	92	90	90
% of teacher attendance	86	100	85	84	86

School Facilities (Total Schools = 1644, Boys school=950 and Girls school=694)							
Government School Basic Facilities	Primary	Middle	High	Higher Sec	Total	Male	Female
Useable Water	1111	172	109	26	1,418(86%)	853(90%)	565 (81%)
Useable Toilet	1196	167	110	26	1,499(91%)	805 (85 %)	694 (100%)
Rooms Available	5197	658	1298	587	7,740(Avg 5)	4040 (Avg 4)	3700 (Avg 5)
Rooms used for classes	3650	443	987	485	5,565(Avg 3)	2740(Avg 3)	2825(Avg 4)
Number of Schools with 1 or 2 classrooms	418	132	--	--	550(33%)	320(34%)	230(33%)
Availability of Playground	546	86	38	11	681(41%)	530 (56%)	151 (22%)
Availability of Boundary wall	1324	183	111	26	1,644(100%)	950 (100%)	694 (100%)

District Education Budget for Schools FY 2009-10 to 2011-12 (Rs.Millions) ⁵						
Financial Year	Allocation			Utilization		
	Current	Development	Total	Current	Development	Total
2009-10	152.661	7.531	160.192	160.926 (105%)**	8.647 (115%)**	169.573 (105%)**
2010-11	190.283	11.242	201.525	190.255 (100%)**	12.515 (111%)**	202.770 (101%)**
2011-12	251.727	10.791	262.518	--	--	--

** Special Fund for Education (Flood) by the direction of CM

Urgent Action and suggestions

- Ensure 100% enrollment of 4-10 years old girls & boys in schools on time, and at an appropriate age
- Ensure quality learning is taking place in schools by reducing absenteeism of teachers & students, and regular monitoring by parents/SC
- Ensure adequate number of teachers in schools (high priority be given to 1 and 2 teacher schools)

--: data is not available

² Source: ASER 2011

³ Source: District Education Department Mardan (Feb 2012)

⁴ Source: District Literacy Department (Feb 2012)

⁵ Source: District Finance & Planning Department (Feb 2012)